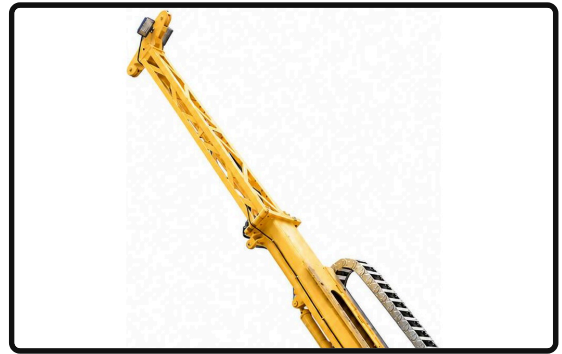


JCD400T CORE DRILLING RIG

SPECIFICATION SHEET · TRAILER-MOUNTED WIRELINE DIAMOND CORING



500 m

WIRELINE CORING DEPTH · BTW

70 kW

YUCHAI TURBO DIESEL

14 t

MAX PULL-UP CAPACITY

DRILLING CAPABILITY

Coring Sizes	HTW · NTW · BTW (wireline)
Drill Depth	200 m (HTW) / 400 m (NTW) / 500 m (BTW)
Torque	350–700 N·m
Rotation Speed	Up to 1 300 rpm
Feed Stroke	1 900 mm
Drilling Angle	45–90°
Max Pull-Up / Push-Down	14 t / 7 t
Mast	One-piece, ground-touching

POWER & HYDRAULICS

Engine	YUCHAI turbocharged diesel
Engine Option	Cummins diesel available on request
Rated Power	70 kW @ 2 400 rpm
Hydraulic Pressure	20 MPa rated
Hydraulic Flow	160 L/min
Cooling	Air-cooled
Controls	Manual & remote control

MUD PUMP & HOIST

Mud Pump	BW-100 · 0–100 L/min · 0–7 MPa
Rope Hoist	600 kg lift · 600 m × ø6 mm rope
Hoist Speed	100–300 rpm

MOUNTING & TRANSPORT

Mounting	Road-tow trailer chassis with hydraulic outriggers
Drilling Module	Identical drilling package to the JCD400 crawler
Trailer Dimensions / Weight	On request (differs from crawler version)

**HEAVY-DUTY DRILLING EQUIPMENT, BUILT FOR AFRICAN
CONDITIONS.**

Leading Manufacturer of Water Well & Borehole Drilling Rigs in
Africa
Specifications subject to change without notice · Drillbuilders Pty
Ltd